



The Towns of Dover and Pawling, NY, join the Appalachian Trail Conservancy (ATC) and the New York-New Jersey Trail Conference in cordially inviting you to participate in the official designation of Dover and Pawling as the Harlem Valley Appalachian Trail Community

June 15, 2013

991 New York Route 22 Pawling, NY



Appalachian Trail Boardwalk

Honored Guests & Speakers

Superintendent Wendy Janssen
Appalachian National Scenic Trail

Executive Director/CEO Mark Wenger
Appalachian Trail Conservancy

U.S. Congressman Chris Gibson

Supervisor Ryan Courtien
Town of Dover

Supervisor Dave Kelly
Town of Pawling

Executive Director Mary Kay Vrba
Dutchess County Tourism

Senior Land Projects Manager Karin Roux
Dutchess Land Conservancy

Executive Director Edward Goodell
New York-New Jersey Trail Conference

Regional Director Karen Lutz
Appalachian Trail Conservancy

AGENDA

Activities and Ceremony to take place at the A.T. Boardwalk and are FREE

12:00 pm Trail To Every Classroom
Activities for youth and families

12:00 pm to 3:30 pm Interpretive Hikes
At 12:00 pm; 1:00 pm and 2:00 pm

Hikes are first come, first serve to the first 25. Learn about the history and management of the boardwalk, the Trail and water tower restoration; see Corbin Hill; family friendly! Hike descriptions and sign up at the Welcome Table.

2:00 pm Exhibits

4:00 pm Designation Ceremony

Reception Immediately Following Ceremony
Next door at Native Landscapes

Music: Jay Erickson of Red Rooster

Partners and Exhibitors

Appalachian Trail Conservancy
Campmor
Dover Furnace
Dutchess County Tourism
Dutchess Land Conservancy
Eastern Mountain Sports
Friends of the Great Swamp (FrOGS)
Harlem Valley Girl Scouts
Madava Farms,
Home of Crown Maple Syrup
Metro-North Railroad

Mid-Hudson Chapter, Trout Unlimited
Mizzentop Day School
Naromi Land Trust
National Park Service
Native Landscapes and Garden Center
New York-New Jersey Trail Conference
New York State Bluebird Society
Oblong Land Conservancy
Pawling Girl Scouts
Pawling Nature Reserve
Ralph T. Waterman Bird Club

Vendors:

BonaVenia Pizza King

CCM On Site Food Service &

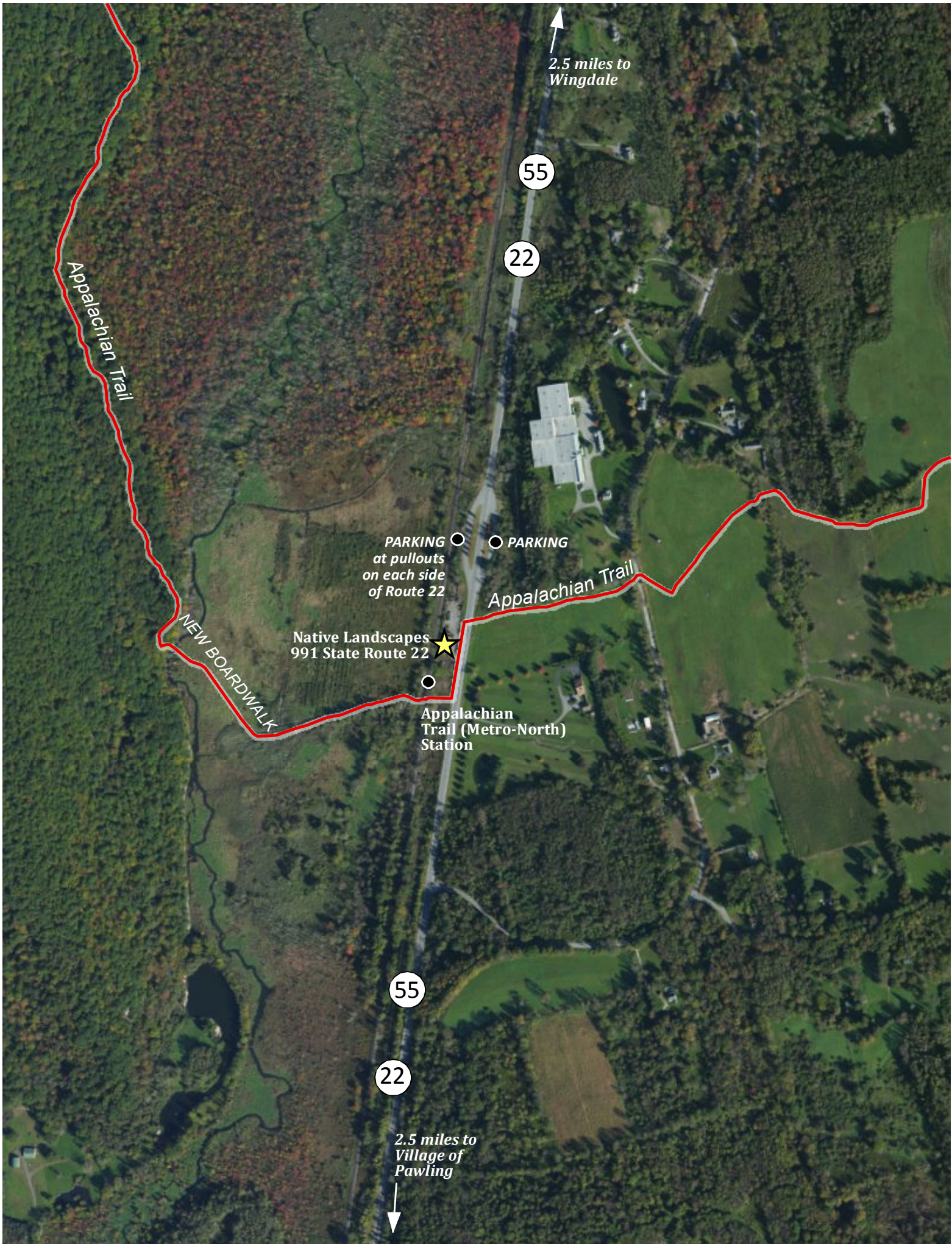
The Sweet Bus

[Click and Share on Facebook](#)

RSVP: Katie Palmer-House,
townclerk@townofdoverny.us, 845.832.6111

Program questions, contact: Julie Judkins, ATC, 828.254.3708 jjudkins@appalachiantrail.org

The Appalachian Trail Community™ program recognizes communities that promote and protect the Appalachian Trail.



2.5 miles to Wingdale

55

22

Appalachian Trail

PARKING
at pullouts
on each side
of Route 22

PARKING

Appalachian Trail

NEW BOARDWALK

Native Landscapes
991 State Route 22

Appalachian
Trail (Metro-North)
Station

55

22

2.5 miles to
Village of
Pawling